

BLUEHEALTHTECH

Systematically connects marine research with healthcare and the health industry for the first time, aiming to develop innovative approaches for the prevention and treatment of chronic diseases.

The focus is on transferring scientific knowledge and methods from marine research to applied research and development, with the aim of generating medical, technical and therapeutic innovations.

The R&D projects will be potentially marketable because of their high technology readiness level (TRL), leading to technology transfer and regional spin-offs. Stakeholders will be integrated at an early stage to identify market entry barriers and to promote the dynamic development of the alliance. The innovations contribute significantly to enhancing economic development and shaping structural change in the region.

CHRONIC DISEASES

Around 75 percent of all deaths in Germany are attributable to chronic diseases. These cost over 200 billion euros annually. Mortality and treatment costs can be reduced through early detection and timely treatment of the disease. This requires new approaches to the diagnosis, prevention, and treatment of chronic diseases.

BlueHealthTech is therefore dedicated to the development and commercial exploitation of new biochemical substances based on marine substances.



bluehealthtech.de

bluehealthtech.de

THE REGION

BlueHealthTech is based in Kiel and the surrounding districts of Rendsburg-Eckernförde and Plön. Numerous actors from the fields of marine science and medicine are based here.

Together with Denmark, Norway, and Sweden, the Kiel region forms a dynamic maritime innovation area connected by economic ties and a long history. This special connection opens further opportunities to support alliance partners in the internationalization of their activities.



THE FUNDING PROGRAMME

BlueHealthTech was selected from over 130 applications to the Federal Ministry of Research, Technology and Space for support as part of the WIR! programme. The program promotes regional alliances to initiate sustainable, innovation-based structural change.

BlueHealthTech received top marks in the interim evaluation and therefore qualified for the maximum level of support. As a result, the alliance will have a total of approximately 15€ million at its disposal until 2027.

BE PART OF IT

New actors are welcome:

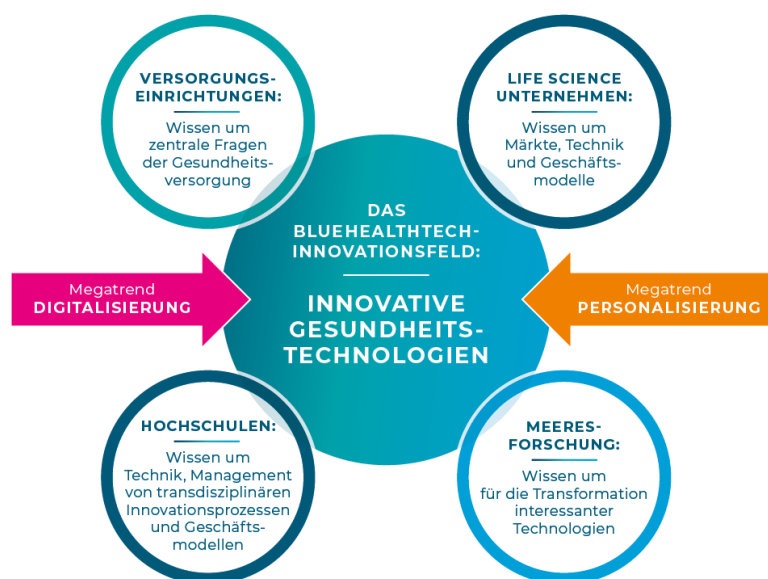
bluehealthtech.de/participate

Follow us on LinkedIn:



UNIQUE INNOVATIONS

The BlueHealthTech innovation field is based on collaboration between different sectors. Until now, marine research and medicine have rarely worked together, even though both disciplines could significantly benefit from each other. As part of BlueHealthTech, healthcare facilities, their medical staff and patients identify key questions relating to chronic diseases. Research institutions and companies from the pharmaceutical, medical technology and marine biotechnology sectors then address these issues. All alliance partners then seek interdisciplinary solutions together. With its excellent marine science expertise and innovative healthcare facilities, the Kiel region is ideally suited to this purpose.



THE PROJECTS

To promote innovative R&D projects, the Alliance Office has issued four calls for project proposals to date. A total of 62 proposals were submitted. Fourteen projects are being supported in the first phase of the Alliance, and a further nine are expected in the second.

CONTACT

Prof. Dr. Anton Eisenhauer, Alliance Coordinator
 GEOMAR Helmholtz Centre for Ocean Research Kiel
 Wischhofstraße 1-3, 24148 Kiel, Germany
 e-mail: info@bluehealthtech.de

Last updated: December 2, 2025

The advisory board

proposes suitable projects for funding to the BMFTR and supports the strategic development of BlueHealthTech.

- Prof. Dr. Sibylle Loibl, GBG Research GmbH, Chair of the Advisory Board
- Prof. Dr. Eberhard Sauter, Alfred-Wegener-Institute Helmholtz- Centre for Polar and Marine Research, Vice Chair of the Advisory Board
- Prof. Dr. Kathrin Adlkofer, CELLBOX SOLUTIONS GMBH
- Prof. Dr. Angela Brand MPH, Maastricht University
- Andreas Burmester, Maritime Coordinator for the State of Schleswig-Holstein
- Andrea Galle, BKK mkk – My Health Insurance
- Dr. Thomas M. Helms, German Foundation for the Chronically Ill
- Dr. Claudia M. Kunz MBA, Baden-Wuerttemberg Cooperative State University
- Ulrike Wielatt, KielRegion GmbH

The steering group

decides on the strategic direction and content of the alliance.

- GEOMAR Helmholtz Centre for Ocean Research Kiel
- Kiel University
- Stryker Trauma GmbH
- University Hospital Schleswig-Holstein, Campus Kiel

The Alliance Office

plans, coordinates, and controls the Alliance's activities. It organizes internal and external communication and supports funding processes. The Alliance Office is also funded by the Schleswig-Holstein Ministry of Economic Affairs and the organizations in the steering group.

- GEOMAR
- DSN Connecting Knowledge